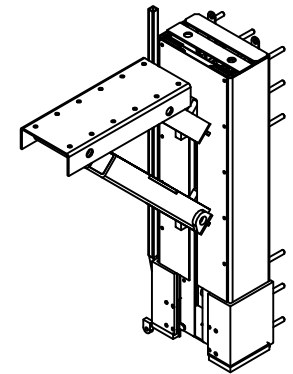
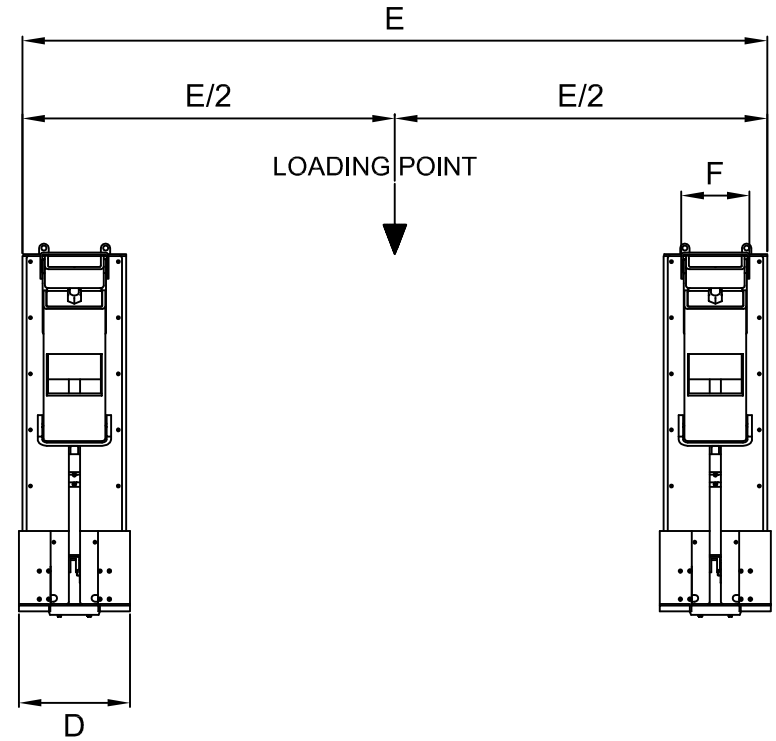
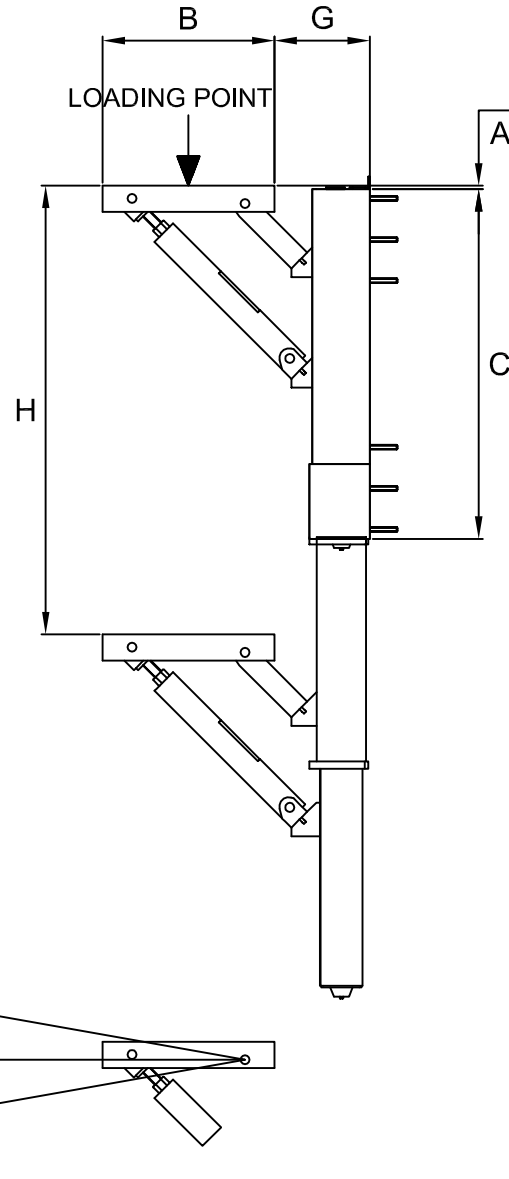


Lifting capacity (Kg)	300	850
Static load capacity with auxiliary pinlocks engaged (Kg)	800	1200
A (mm)	10	10
B (mm)	460	460
C (mm)	935	935
D (mm)	300	300
E (mm)	ADJUSTABLE DISTANCE	ADJUSTABLE DISTANCE
F (mm)	185	196
G (mm)	260	260
H (mm)	1200	1200
I (°)	10	10
Weight (Kg)	260	450



Product

PS (PAIR)

Hydraulic Platform Lifting System